

4K UHD INTERACTIVE FLAT PANEL

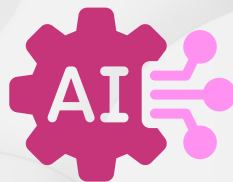
EMPOWERING CLASSROOMS THROUGH SMART TECHNOLOGY



Experience seamless collaboration with BrioMeet Video Conferencing software.



Easily Switch between multiple OS to stay connected.



IntelliNote: Writing Software create and collaborate effortlessly.



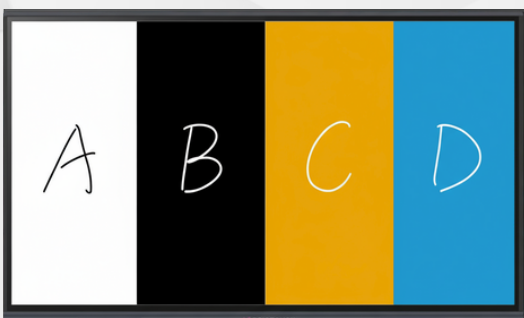
Built-in Android ensures faster, secure, and reliable performance.



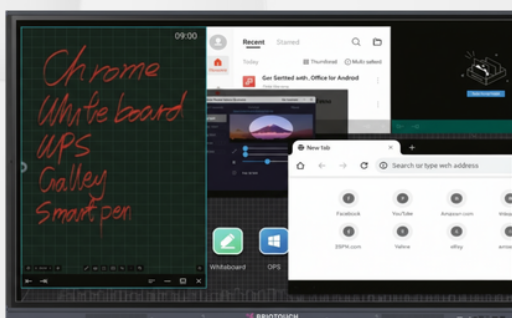
Commercial Display with a Duty Cycle of 24x7 Continuous Usage

SHAPING THE FUTURE OF CLASSROOMS WITH AI-DRIVEN, INTELLIGENT, AND INTERACTIVE TECHNOLOGY.

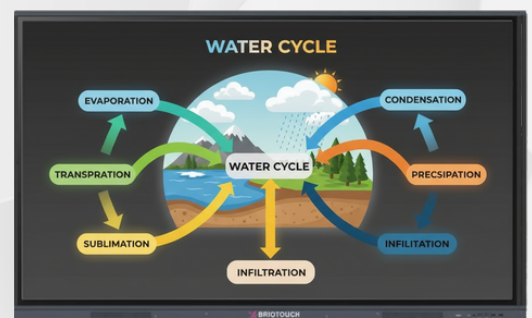
Split whiteboard for multiple interaction



Multi Windows/PIP Functionality



Turn any topic into an easy mind map



CREATE. COLLABORATE. COMMUNICATE.

CLASSIC SERIES

SPECIFICATION OF 65" 4K UHD LED INTERACTIVE TOUCH PANEL

ANDROID 14.0 | 8GB RAM | 128GB ROM WITH BUILT-IN 48MP AUTO-TRACKING AI CAMERA & MICROPHONE

Panel	
Panel Type	Commercial Grade Panel
Visual Ratio	16:09
Resolution	3840 (H) × 2160 (V)
Pixel pitch	0.372×0.372mm
Toughened Glass	Anti-glare, 8 Mohs
Frequency	60Hz
Brightness	350 nits
Display Colors	1.07B (10bit)
Bonding Technology	Zero Bonding
Viewing Angle	178°(H/V)
Light source	DLED
Audio	
Speaker	20W x2
Touch	
Touch specifications	Non-contact infrared sensing technology
Touch Points	40 Points Touch
Input mode	Opaque object (finger, pen, etc)
Palm Rejection	Enabled
Response time	≤4ms
Touch Accuracy	±1mm
Output coordinates	32767 (W) × 32767 (D)
Android Module	
System Version	Android 14.0
CPU	Octa Core A55
Frequency	1.5 Ghz
GPU	Quad Core MaliG52
RAM	8GB
ROM	128GB
Wireless Connectivity	
Bluetooth, WiFi, Hotspot	
Input and Output Ports	
Front Ports: USB Type A 3.0 x2; HDMI In x1; USB Type B(Touch Out) x1; USB-Type C x1	
Rear Ports: TF Card x1; USB Type A 3.0 x1; USB Type A 2.0 x1; HDMI In x1; USB Type B (Touch Out) x1; RJ45 LAN In x1; RS232x1; Audio Out x1; Coax x1	
Built-in Camera & Mic	
Camera	48MP AI Camera with Auto Tracking
Microphone	8 Array Mic with wide voice pickup range
Power	
Voltage	100-240V~ 50/60Hz 4A
Max. power consumption	≤400W
Standby power consumption	≤0.5W
Structure	
Dimension	1484.6×903.08×87.2mm
VESA hole site	600 x 400 mm
Net weight	40kgs
Accessories	
Power cord x 1, Stylus x 2, Wall Mount Kit x 1, Remote Control x1	
OPS Module (Optional)	
CPU	Intel Core i5 / i7
RAM	8GB (Upgradable)
SSD	256GB (Upgradable)
Input & Output Ports	USB Ports x5, DP x1, HDMI x1, RJ-45 x1, Audio & Mic x1, Wi-Fi x1, Type C x1



OPTIONAL ACCESSORIES



Sliding Shutter



Brio Quickshare



Open Pluggable Specification



Interactive Flat Panel Stand

OPTIONAL SOFTWARE



K-12 Content



Brio AI: Intellinote



Offline Quiz Bank



3D Virtual Content



Learning management software



Cyber Security Software



Briomeet: Video Conferencing Software



Brio Device Management Software

All images are only for representation purpose only. Actual product might differ due to change/upgrade in technology



Brio Interactive Technologies Limited

A12, FIEE Complex, Okhla Industrial Area Phase-2, New Delhi-20

Email: sales@briotouch.com | Contact: +91 9643324493

Website: www.briotouch.com