

4K UHD INTERACTIVE FLAT PANEL

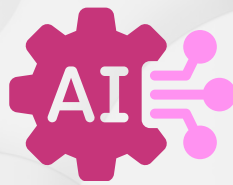
EMPOWERING CLASSROOMS THROUGH SMART TECHNOLOGY



Experience seamless collaboration with BrioMeet Video Conferencing software.



Easily Switch between multiple OS to stay connected.



IntelliNote: Writing Software create and collaborate effortlessly.



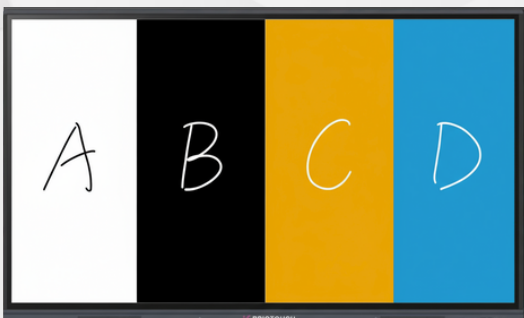
Built-in Android ensures faster, secure, and reliable performance.



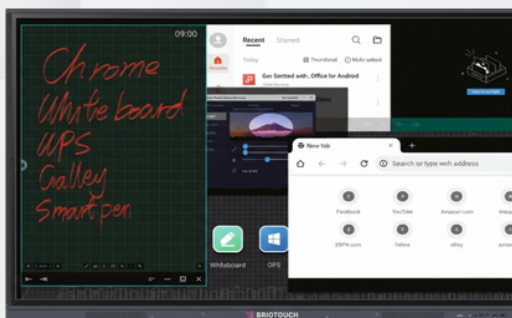
Google EDLA Certified ensures secure, seamless access all apps.

SHAPING THE FUTURE OF CLASSROOMS WITH AI-DRIVEN, INTELLIGENT, AND INTERACTIVE TECHNOLOGY.

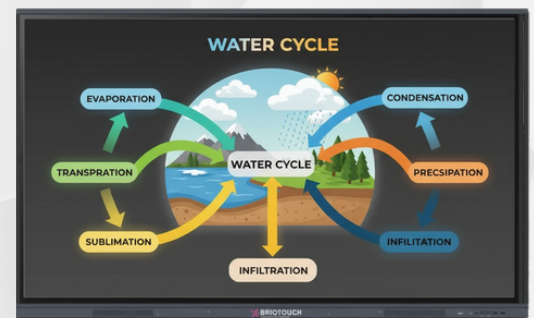
Split whiteboard for multiple interaction



Multi Windows/PIP Functionality



Turn any topic into an easy mind map



CREATE. COLLABORATE. COMMUNICATE.

PREMIUM SERIES

SPECIFICATIONS OF 75 INCHES - 4K UHD LED TOUCH PANEL ANDROID 14.0 | 8GB RAM | 128GB ROM



Google EDLA Certified Panel	
Panel Type	Commercial Grade Panel
Visual Ratio	16:09
Resolution	3840 (H) × 2160 (V)
Pixel pitch	0.42975×0.42975mm
Toughened Glass	Anti-glare, 8 Mohs
Frequency	60Hz
Brightness	350 nits
Display Colors	1.07B (10bit)
Bonding Technology	Zero Bonding
Viewing Angle	178°(H/V)
Light source	DLED
Audio	
Speaker	20W x2 with subwoofer
Touch	
Touch specifications	Non-contact infrared sensing technology
Touch Points	40 Points Touch
Input mode	Opaque object (finger, pen, etc)
Palm Rejection	Enabled
Response time	≤4ms
Touch Accuracy	±1mm
Output coordinates	32767 (W) ×32767(D)
Android Module	
System Version	Android 14.0
CPU	Octa Core (A73*4 + A53*4)
Frequency	2.21 Ghz
GPU	Octa Core MaliG52
NPU	3.2TOPS
RAM	8GB
ROM	128GB
Wireless Connectivity	
Bluetooth, WiFi, Hotspot	
Input and Output Ports	
Front Ports: USB Type A 3.0 x2; HDMI In x1; USB Type B(Touch Out) x1; USB-Type C x1	
Rear Ports: TF Card x1; USB Type A 3.0 x1; USB Type A 2.0 x1; HDMI In 2.1 x1; HDMI Out x1; USB Type B (Touch Out) x1; RJ45 LAN In(1000Mbps) x1; RS232x1; Audio In x1; Audio Out x1; Optical Out (SPDIF) x1	
Power	
Voltage	100-240V~ 50/60Hz 4A
Max. power consumption	≤400W
Standby power consumption	≤0.5W
Structure	
Dimension	1706.76×1027.32×87.31mm
VESA hole site	600 x 400 mm
Net weight	52kgs
Accessories	
Power cord x 1, Stylus x 2, Wall Mount Kit x 1, Remote Control x1	
OPS Module (Optional)	
CPU	Intel Core i5 / i7
RAM	8GB (Upgradable)
SSD	256GB (Upgradable)
Input & Output Ports	USB Ports x5, DP x1, HDMI x1, RJ-45 x1, Audio & Mic x1, Wi-Fi x1, Type C x1



OPTIONAL ACCESSORIES



Sliding Shutter



Brio Quickshare



Open Pluggable Specification



Interactive Flat Panel Stand

OPTIONAL SOFTWARE



K-12 Content



Brio AI: Intellinote



Offline Quiz Bank



3D Virtual Content



Learning management software



Cyber Security Software



Briomeet: Video Conferencing Software



Brio Device Management Software

All images are only for representation purpose only. Actual product might differ due to change/upgrade in technology



Brio Interactive Technologies Limited

A12, FIEE Complex, Okhla Industrial Area Phase-2, New Delhi-20

Email: sales@briotouch.com | Contact: +91 9643324493

Website: www.briotouch.com